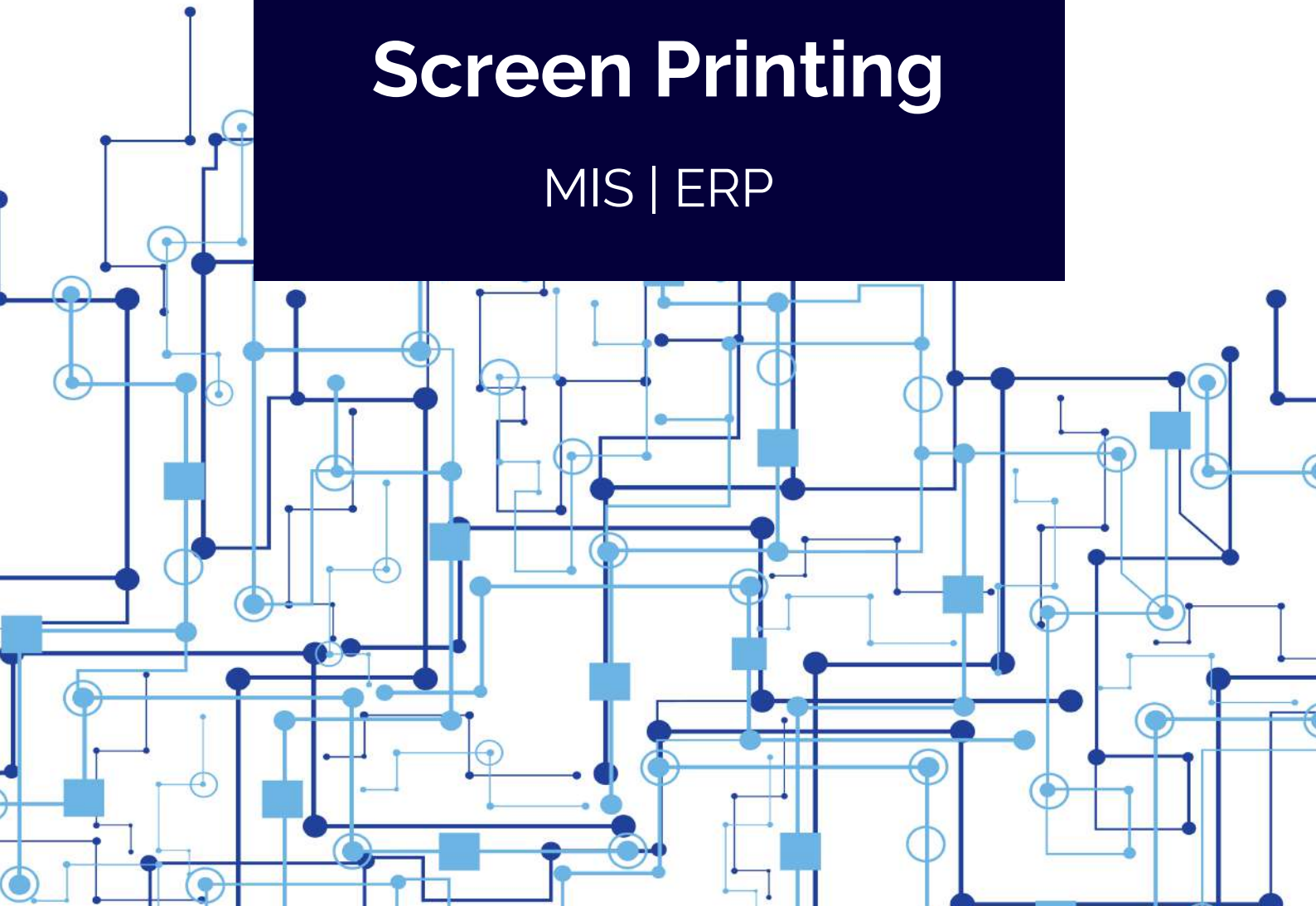




# Sistrade Software Screen Printing

MIS | ERP



# GET TO KNOW SISTRADE

SISTRADE – Software Consulting, S.A. is an information systems company with know-how in software development and consulting service for different areas, including industrial companies. SISTRADE main goal is to offer the market the best information systems tools, in order to help its customers to improve their performance in all the critical business processes.

## Our Solutions



## Our Markets

- Printing & Packaging Industry
- Labels & Flexible Packaging Industry
- Security Printing Industry
- Metalworking Industry
- Plastic Extrusion Industry
- Screen Printing
- Publishing Industry
- Wire and Cable Industry
- Textile Industry
- Beverage Industry
- Service sector

**SISTRADE is also certified in the standards NP 4457:2007 and ISO 9001:2015**



[WWW.SISTRADE.COM](http://WWW.SISTRADE.COM)

# Key Points



**+ 3000 Users**



**+ 20 Countries**



**4 Continents**



**Industry 4.0**



**Optimized for Screen Printing**



**SQL Server**



**Cloud Based**



**Easy Interface**



**Multi-device**



**Flexible and adaptable**



**+ 15 Languages**



**Business Intelligence**

# Sistrade ERP Software - Screen Printing



## Main features

- Screen printing estimating
- Detailed costs calculation
- Technical data sheet
- Streamlining of variant provision process of the same product
- Detailed customisation of each variant (ink/pantone and dimensions)
- Screen printing imposition
- Screens specification
- Specification of production stages
- Direct generation of pre-press material job orders
- Overall job order management
- Graphical process management
- Automatic colour validation management through external images
- Ink/pantone information management
- Order technical data overview for JO generation
- Streamlining of information input for screen printing job orders
- Connection with graphic design software
- Connection with imposition optimisation software
- Approval workflow
- Simulation of other quantities
- Email directly the quotation to the client
- Management of components for the same job order in the data collection

# Sistrade ERP Software - Screen Printing

## Estimating

Sistrade® ERP has made Screen Printing estimate management faster by allowing users in a single estimate to manage multiple variants of a product, this way optimizing the response time to new orders from the clients.



## General data

- Contact information
- Agent or vendor identification
- Multi currency
- Product format, quantity, reference
- Request and expiration dates
- Product description
- Internal comments
- Detailed costs and financial indicators
- Margin application
- Email directly to the client
- Approval workflow
- Simulation of other quantities
- Automatic order generation
- Automatic product technical data sheet generation
- Documents attachment

## Production Processes and Cost Calculation

- Job difficulty: printing, gluing and cutting
- Job screen selection
- Ink/pantone detailed information
- Automatic suggestion of available machines
- Imposition plan
- Detailed record of all manufacturing stages
- Detailed component cost: pre-press, printing, ink, glue and operations
- Material and resource cost calculation
- Machine setup times and respective requirements
- Cost by manufacturing stage
- Application of financial margins, commissions, fixed and administrative costs, rappel
- Multi currency price definition
- Set cost and selling price by quantity (unit, thousand)
- Internal approval workflow

# Sistrade ERP Software - Screen Printing

## Technical Data Sheet

Screen Printing technical data sheets store all the information related to a product and its variants. It is possible in a single data sheet to manage technical information in terms of colours, dimensions, screen and its usability conditions, customer information and attachments. The data sheets are the basis of the process, where the information is gathered allowing a new estimate for a product or variant.



### Features:

- Client and product information
- Product variant information
- Screen selection and application conditions
- Structured ink/pantone information
- Ink/pantone application information
- Comments by operation
- Connection with graphic design software
- Information directly from the estimate
- Automatic comparison and validation of the colours through image import
- Screen printing graphical process management
- Pre-press job order generation

As screen is among the most commonly used in Screen Printing, in Sistrade® ERP the user can define the screen to be used by variant, identifying its usability conditions.

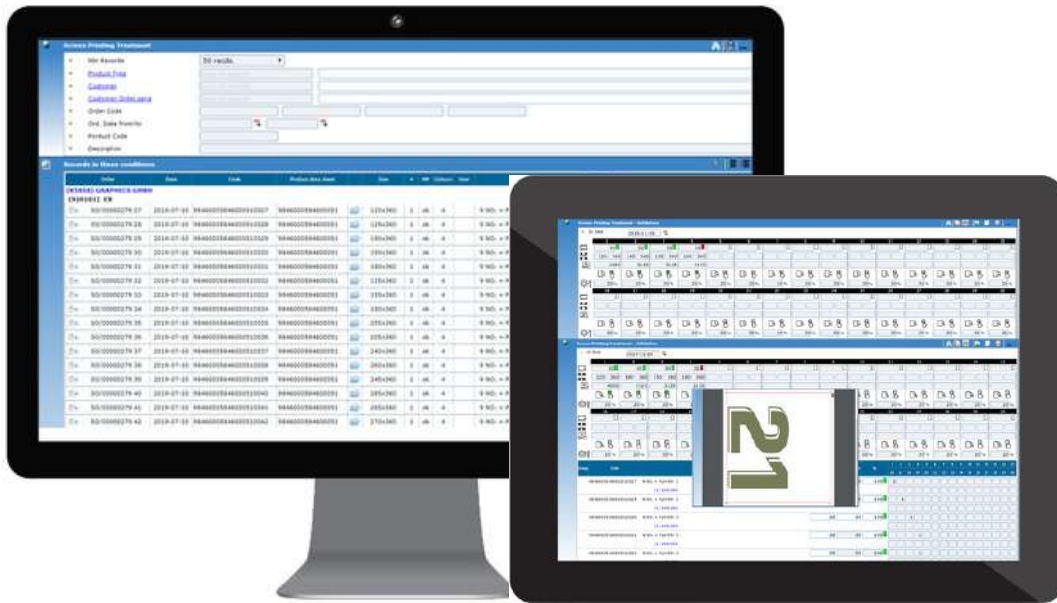
- Streamlining new product creation
- Ink/pantone technical specification
- Detailed screen specification
- Graphical TDS presentation

### Information configurable and recorded on the TDS

- Variants
- Graphical information
- Printing material (screen) and conditions applied
- Product variants, dimensions and client's information
- Colours, copies and sequence
- Technical colour specification
- Comments by operation
- Attached files
- Quality Control
- Graphical Process
- Colour validation and comparison
- Pre-press material
- JO requirements

# Sistrade ERP Software - Screen Printing

## Screen Printing Order Processing



Sistrade® ERP allows the user to manage approved orders, enabling job order creation of various similar articles, for cost and time optimization. One of the advantages of this option is the ability to customize various screen printing components to be generated in a job order.

### Features

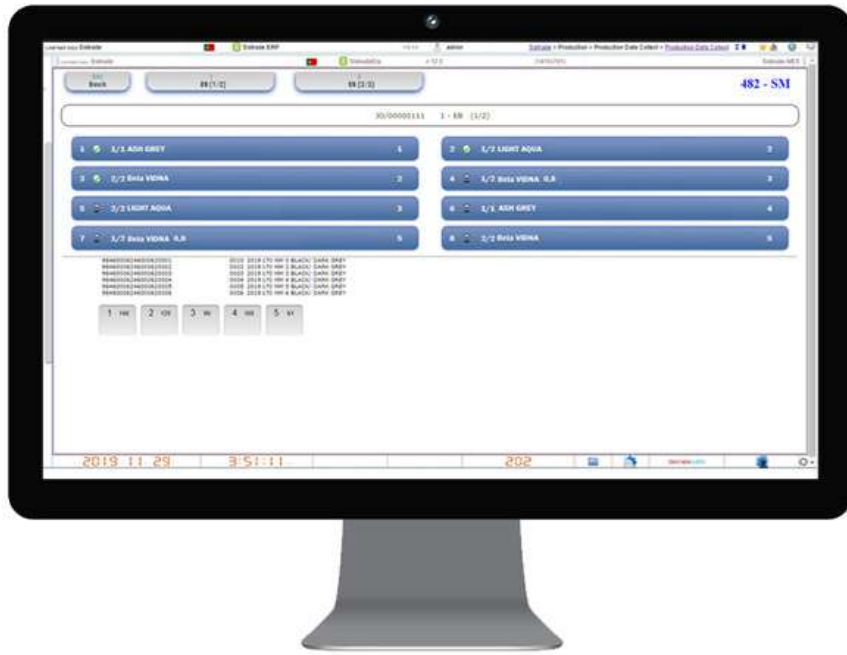
- Management of orders without technical information
- Copying technical information directly from the estimate
- Preparation of technical data for job order generation
- Ongoing screen printing orders overview
- Connection with external imposition optimization software
- Automatic generation of job orders
- Production alert customization
- Order grouping component
- Connection with screen printing graphic design software

### Screen Printing Products by Component and Client

- Automatic generation of new variants
- Generation of new technical data sheets
- Information of product variants
- Generation of pre-press job orders
- Ink/pantone information
- Possibility to get information directly from the estimate

# Sistrade ERP Software - Screen Printing

## Production Data Collection



In the Sistrade® ERP Screen Printing process, it is possible to collect the production data of several variants in a single job order, allowing the user to optimize the working time and management process. The user can see the daily requirements registered, as Sistrade® ERP allows continuous recording of the various operations of different screen printing components only by alternating them, this way allowing the operations completion in various components in a random order.

### Features

- Recording time optimization
- Overview of all job order operations and components
- Reproduction of daily screen printing work in Sistrade® ERP
- Overview of variants to produce in each job order
- Management of missing operations
- Automatic operation completion process



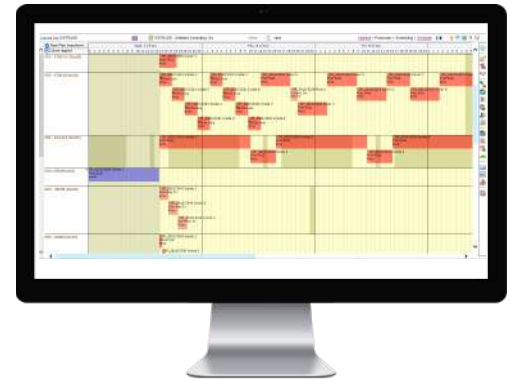


# Sistrade ERP Software - Screen Printing

## Production Management

### Scheduling

- Gantt scheduling of job orders
- Sequencing of operations by drag & drop or in tabular format
- Assisted employee scheduling
- Matrix-based scheduling of operations by employee
- Multi-user scheduling
- Multiple Drag & Drop in Gantt Chart
- Cost Scenarios
- Multi-plant
- Scenarios simulation



### MES - Manufacturing Execution System

- Setup and production monitoring
- Event and operation log
- Interpretation of information from industrial automation
- Materials and finished products picking for monitoring, including warehouse location, number or reference
- Automatic data collection through PLC
- Graphical industrial supervision
- Issuing and controlling job orders
- Industrial costing
- Forecast vs accomplished comparison
- Traceability of the production process
- Local or remote supervision and multi-factory
- Real-time information about the functional status of the machine
- Identification of employees who are working on the machine
- Produced and rejected quantities
- Events and occurrences per machine and per job order
- Display of speed per machine in real-time
- Automatic register of downtimes and their reasons.



# Sistrade ERP Software - Screen Printing

## Dashboards

All modules have the most relevant indicators to be presented for each area, such as the total of invoicing in sales, the occupation of the stocks in the warehouses, approved production orders in production, the total of debit and credit in accounting, the number of active employees in human resources and many others.

With this important tool users can analyze important information of the company filtered by:

- Week/month/quarter/semester/year/financial year and other periods
- Client/vendor/country

### Estimates:

- Estimates requested, assigned, approved and granted
- Estimates response time
- Productions (new vs repeat) and by type

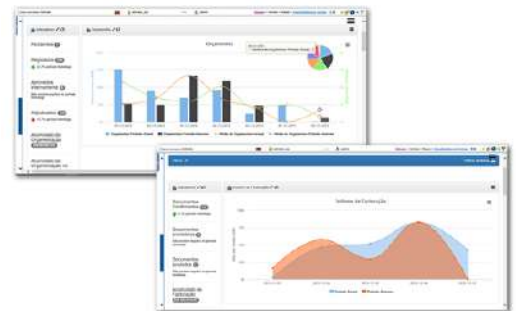


### Orders:

- Orders volume and approved for production
- Pending credit approval
- Return on sales
- Order book
- Orders by country

### Invoicing:

- Sales volume
- Confirmed, provisional and cancelled documents
- Accumulated billing
- Sales ranking (by client and by product)
- Sales by vendor and country



## Key information available for:

- CRM
- Sales
- Procurement
- Stocks
- Production
- Equipment Maintenance
- Quality Control
- Treasury
- Accounting
- Human Resources
- Fixed Assets

# Sistrade ERP Software - Screen Printing

## Business Intelligence

Sistrade® Business Intelligence is a tool that collects and compiles large amounts of data in order to generate relevant information regarding the companies' operations. Through this module, companies have a better understanding of the daily operations as well as their environment. Business Intelligence has a wide application when applied to an organization, as for example, Business, Finances, Sales, Purchases or Production.

### Sistrade Solution

- Perform analysis, by crossing multiple dimensions and metrics
- Apply filters to any dimension of analysis
- Results displayed analytically and graphically using any device: PC, tablet, smartphone
- Information updated hourly, daily or on weekly basis
- Set latency in order to generate, correct and updated data results
- Export data results to PDF, Excel and Word files



### Sales Dashboards

- Analyse sales by profit margin
- Article invoicing
- Payments to suppliers
- Receipts from customers

### Purchases Dashboards

- Analyse the major suppliers
- Most purchased products
- Inventory
- View inventory turnover rate

### Production Dashboards

- Deadline compliance rate
- Job order costs (actual cost vs estimated vs sales value)
- Setup time rate, percentage of setup time over the total production
- Availability ratio: time machine/section/plant should work vs time it is working





powered by **Sistrade**

## Porto - Headquarters

Travessa da Prelada, 511  
4250-380 Porto - Portugal  
inov@sistrade.com

## Madrid

Parque Empresarial La Moraleja  
Avenida de Europa, 19 3º A  
28042 Madrid - Spain  
madrid@sistrade.com

## Ljubljana

Rozna dolina, Cesta II/29  
1000 Ljubljana - Slovenia  
ljubljana@sistrade.com

## Paris

Zone Orlytech Batiment 516  
1 allée du commandant Mouchotte,  
Paray-Vieille Poste, Paris, 91550, France  
paris@sistrade.com

## Warsaw

Al. Niepodległości, 69 - 7º  
02-626 Warsaw - Poland  
warsaw@sistrade.com

## Istanbul

Dikilitaş Hakki Yeten Cad. Sel. Plaza, 10/C  
Kat:6 Fulya 34349 Besiktas - Turkey  
istanbul@sistrade.com