



# Sistrade Software

## Label Printing

MIS | ERP



# GET TO KNOW SISTRADE

SISTRADE – Software Consulting, S.A. is an information systems company with know-how in software development and consulting service for different areas, including industrial companies. SISTRADE main goal is to offer the market the best information systems tools, in order to help its customers to improve their performance in all the critical business processes.

Sistrade® is a web-oriented solution that is ready to settle in the business-to-business world, enhancing and extending the market and promoting electronic trade among companies. By the means of features that ensure adherence to the digital economy through the interconnection with marketplaces, it aims at the conquest of new markets. The application interface is all web-based, it is available from an Internet browser which allows access anywhere in the world, simply using Internet access.

## Technology

All Sistrade® solutions use Microsoft SQL Server support database. It is a relational database which optimises IT environments, providing a safe and reliable platform for data analysis and management. SQL Server delivers fundamental technological advances in terms of information repository for collaborative users and adds value to the organizations.

## Markets

Printing & Packaging Industry  
Labels & Flexible Packaging Industry  
Security Printing Industry  
Metalworking Industry  
Plastic Extrusion Industry  
Publishing Industry  
Wire and Cable Industry  
Baler Twine Industry  
Netwrap Industry  
Beverage Industry  
Service sector  
Commercial sector



**SISTRADE is also certified in the standards NP 4457:2007 and ISO 9001:2015**



[WWW.SISTRADE.COM](http://WWW.SISTRADE.COM)

# Key Points



**+ 5000 Users**



**+ 30 Countries**



**4 Continents**



**Industry 4.0**



**Optimized for Label Converting**



**SQL Server**



**Cloud Based**



**Easy Interface**



**Multi-device**



**Flexible and adaptable**



**+ 15 Languages**



**Business Intelligence**

# Sistrade Software for Label Printing

## Internal Workflow



<b>Elaborate an estimate</b>	Full detailed estimating
<b>Send to the customer for approval</b>	Email directly from the ERP
<b>Order approval</b>	Analysis of customer's current account
<b>Order confirmation</b>	Job order creation
<b>Stocks and Procurement</b>	Suppliers - Warehouse - MRP
<b>Job Order approval for production</b>	Connection with production area
<b>Production Management</b>	MES - Scheduling
<b>Quality Control</b>	From materials to machines
<b>Shipment of the products</b>	Packing - Shipping
<b>Invoicing the customer</b>	Connection with accounting



# Sistrade Software for Label Printing



Go mobile



Speed up processes



Increase the profit



Boost your company

## Main Features

- Fast estimating of any type of work
- Management of cutting and engraving
- Detailed cost calculation
- Comparative cost scenarios
- Additional quantities simulation
- Economic analysis of estimates
- Detailed summary costs
- Estimate's approval workflow
- Electronic submission of the estimate
- Electronic management of documents
- MRP - Material Requirements Planning
- Item numbering indicating the authorization of the issuer
- Identification labels with GS1 standard barcodes
- GTIN code generation for finished products
- Standard reports, report generator and Dashboards

## GS1 Standard

- Configure multiple types of labels
- Configure a standard label layout or personalized by customer
- Labels with GS1 standard barcodes
- Labels numbering according to wine commission control
- Generate GTIN code according to GS1 standard

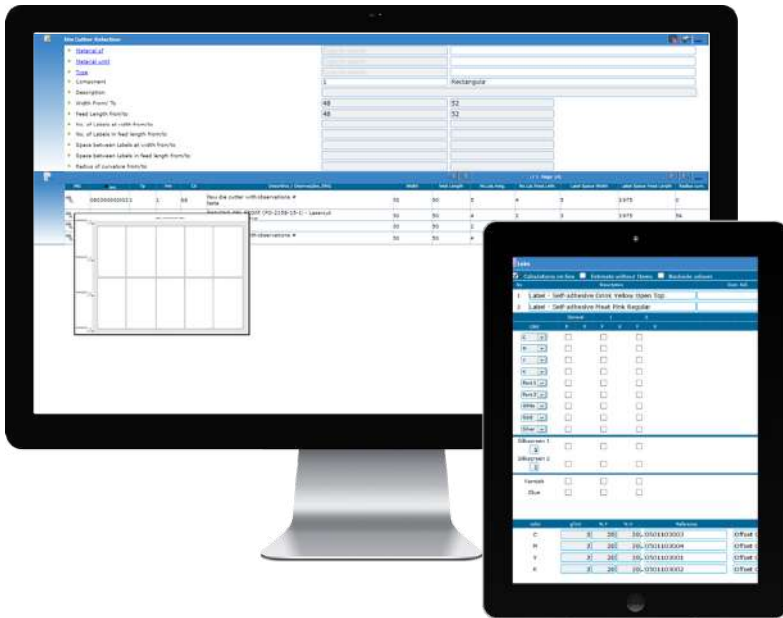
## Products

- Labels
- Sleeves
- Booklets
- Peel-off
- Tickets
- Stickers



# Sistrade Software for Label Printing

## Estimating



**Sistrade® allows users to elaborate a fast and detailed quotation, simulate other quantities, send directly to the client and register the approval.**

### Customer Data

- Customer data, credit information and payment conditions
- Agent or vendor association
- Request and expiration dates
- Customer comments

### Inks, Stamping and Silkscreen

- Selection of CMYK colours and Pantone
- Application of varnish and glue
- Stamping and screen printing
- Definition of their use in front or backside
- Grouping by references/signatures

### Job Definition

- Insertion of parameters fully adjusted to the customer
- Definition of references, label format, quantities and base materials
- Selection of die cutter, rewind, stamping, silkscreen and lamination type and parameters
- Definition of space between labels and side margins
- Additional production (%)

### Die Cutter Management

- Management of all in-house die cutters
- Creation of new die cutter types by introducing some data about the height and width of the label, label distribution, space between labels, etc. in the die cutter settings
- Die cutter life cycle

## Estimating



## Printing, Stamping, Screen Printing and Cutting

- Automatic suggestion of viable machines for printing and stamping
- Job difficulty definition
- Possibility to have multiple printing stages
- Automatic imposition and cutting plan representations
- Analyse the printing and die cutting plan of the selected machine
- Automatic calculation of printing and stamping cylinders, plate and die cutting format, space between labels, etc.
- Automatic stamping imposition plan
- Management of stamping: inline or extra process
- Calculation of the revolution values, times/costs, printing film, etc.
- Automatic calculation of the number of reels and the reel diameter
- Analyze the cost scenario comparisons
  - Best process to achieve the lowest cost
  - Break-even point between Digital and Flexo/Offset

## Operations and Materials

- Display operations to execute according to the machine previously selected
- Estimated cost and time of operations
- Change operations to execute by manufacturing phase
- Materials to be consumed and respective quantities

# Sistrade Software for Label Printing

## Estimate - Calculation



### Estimate Cost Calculation

- General costs of preparation and printing, evaluating the measurements on the plan, tracks, ink area, times, etc.
- Costs of varnish, including setup time and printing types
- Costs with resources, machines, preparation times and respective needs
- Prepress and finishing operations, including outsourced phases
- Other tools and materials
  - Specific tools which cost is not incorporated in the final product and are paid separately

### Detailed Costs Summary

- Cost by manufacturing stage (value and %)
- Unit, thousand and total cost

### Margins & Final Values

- Application of margins, with margins index, commissions, administrative costs, fixed costs, rappel, etc.
- Possibility to define default margins by product type and by customer
- Economic analysis





## Estimate - Analysis and Approval



### Additional Quantities Simulation

- Simulation of additional quantities with the possibility to change margins
- Determination of the cost and selling price by quantity
- Possibility to simulate several quantities simultaneously in seconds

### Approval Workflow

- Estimate details and costs
- Margins edition
- Add competitor's data

### Other Features

- Manage and add attachments to the estimate
- New estimate version
- Easily accessible "Last Estimates" and advanced search

### Follow-up

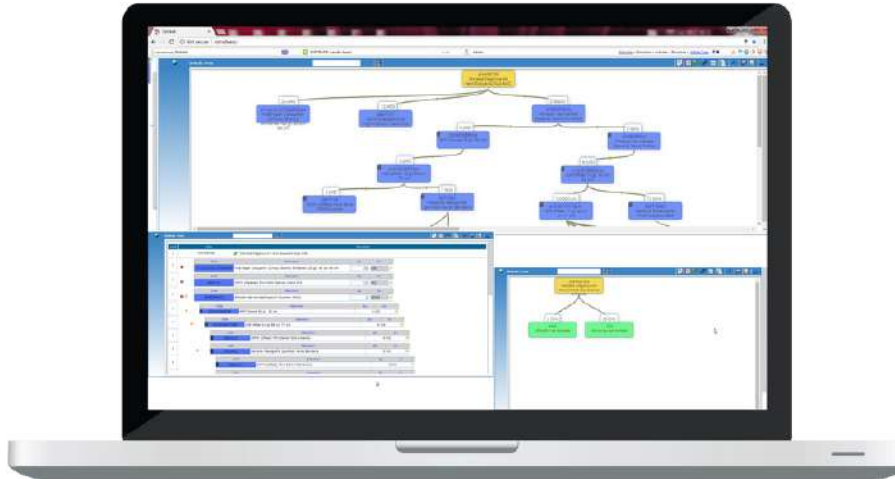
- Estimate sent directly to customer's e-mail
- Add attachments of extra files
- Customer feedback and competition information
- Review estimate, comments and justification

### Key Features

- Optimization of calculation based on existing die cutters
- Cost scenarios
- Additional quantities simulation
- Wine numbering

# Sistrade Software for Label Printing

## MRP - Materials Requirements Planning



MRP enables companies to achieve compliance with the maximum number of customer orders keeping its promises to customers, by allowing a closer cost control during the material acquisition, a shorter processing time for the users in the complex planning of Job Orders and Purchase Orders and also greater fluidity in data processing.



Material requisitions



3D Load chart

### MRP Stages:

- **Stage 1** – Selection of orders
- **Stage 2** – Selection of materials to be processed
- **Stage 3** – Calculation of purchase needs, production and reserves
- **Stage 4** – Calculation of dates and their linking with lead times of purchase and manufacture

### Paper Purchase - Cutting Assistant

- Cut a basic material in stock to obtain multiple raw materials

# Orders, Shipment and Invoicing



Sistrade® keeps track of all the documentation through the internal workflow, from the moment the customer confirms the order until its shipment.

## Customer Orders

- Order status management
- Credit approval
- Commercial tolerance (%/Qty.)
- Delivery plan and shipping instructions
- Automatic generation of job order

## Shipment

- Deliveries not yet expedited
- Delivery notes
- Consolidation of cargo
- Print notes and cargo groups

## Invoicing

- Payment conditions and due date
- Payment method
- Possibility to invoice to an entity different from the order
- Documentation workflow
- Electronic submission and batch printing



# Sistrade Software for Label Printing

## Manufacturing 4.0



SISTRADÉ has the right tool to push your company to the Industry 4.0, optimizing, automating, and controlling your production line. One of Sistrade's key applications is Manufacturing Execution System (MES), which delivers solutions to plan, collect data, supervise, and control the industrial process.

### Supervisory Control and Data Acquisition (SCADA)

- Local or remote supervision: multi-factory
- Real-time information about the machine status
- Identification of employees working on the machine
- Identification of the job order in progress
- Produced and rejected quantities
- Operations carried out per job order
- Events and occurrences per machine and per job order
- Display of speed per machine in real-time
- Charts of speed history
- Automatic record of downtimes and their reasons
- Real time of preparation and production
- Analysis of profitability
- Occupancy rates
- Analyze productive vs. unproductive time
- Efficiency per machine



# Manufacturing 4.0

## Job Orders

- Automatic generation through order confirmation
- Series and versions management
- Approval workflow
- Attach documents to support productive process
- Machine parameters
- Grouped job orders
- List of materials to consume
- Production lot definition



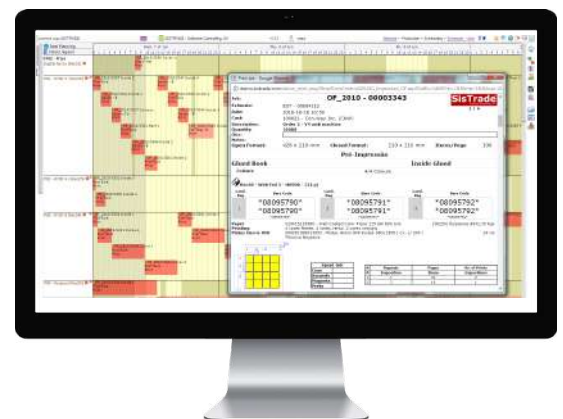
## Production Data Acquisition

- Release of job orders (start/end)
- Start/end of operations (productive activities)
- Assign/withdraw employees to/from certain machines
- Reason of events (unproductive activities)
- Materials to be incorporated in the machine
- Production records
- Quality Control tests



## Scheduling

- Visualization of job orders on Gantt chart
- Assisted production simulation
- Operation or activity planning
- Real-time indexing of the start/end of production
- Load analysis and resource availability
- Color coded operations status
- Drag & Drop of multiple operations
- Management of delivery dates
- Scenarios simulation
- Multi-plant





# Sistrade Software for Label Printing

## Standard Reports and Report Generator

Sistrade® solution provides various standard reports for all of the areas of the ERP, allowing a quick access to key information on the company.

### Sales

- Sales ranking, analysis and evolution
- Commissions report
- Return on sales
- Documents tracking
- Orders evolution
- Delivery time control
- Sales by basic material/product

### Procurement

- Control of purchases orders/receptions
- Supplier prices catalogue
- Control of supplier invoices
- Inventory
- Subcontracts costs expected/real
- Annual purchase invoicing
- Monthly/accumulated purchases
- ABC supplier analysis

### Production

- Operator and machine productivity
- Expected production time vs real time
- Real-time beginning and end of production
- Real-time information about machine status
- Machine history
- Produced and rejected quantity
- Evaluation of KPIs

### Accounting

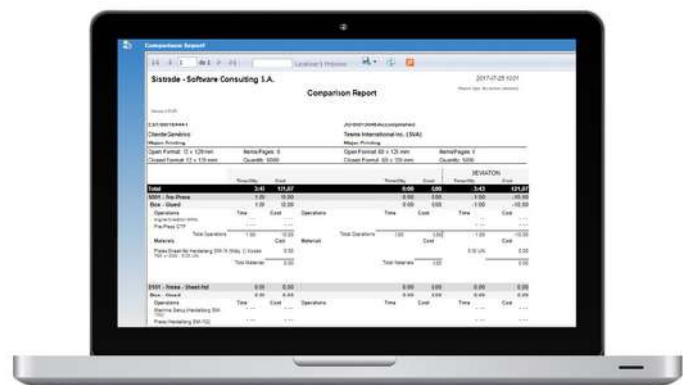
- Statements
- Accumulated
- Trial Balances – General Ledger
- Fiscal reports
- Income statement

### Treasury

- Current accounts
- Statement of settlements
- Due date and collection notices
- Vendors/agents
- Banks and cash

### Report Generator

- Sistrade® allows the user to generate specific reports from any module according to its needs



Forecasted VS Accomplished

## Dashboards

All modules have the most relevant indicators to be presented for each area, such as the total of invoicing in sales, the occupation of the stocks in the warehouses, approved production orders in production, the total of debit and credit in accounting, the number of active employees in human resources and many others.

With this important tool users can analyze important information of the company filtered by:

- Week/month/quarter/semester/year/financial year and other periods
- Client/vendor/country

### Estimates:

- Estimates requested, assigned, approved and granted
- Estimates response time
- Productions (new vs repeat) and by type

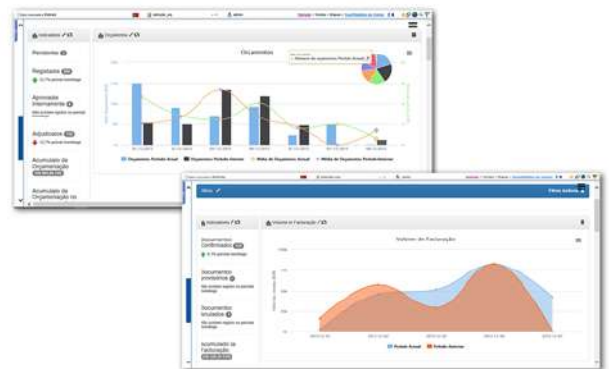


### Orders:

- Orders volume and approved for production
- Pending credit approval
- Return on sales
- Order book
- Orders by country

### Invoicing:

- Sales volume
- Confirmed, provisional and cancelled documents
- Accumulated billing
- Sales ranking (by client and by product)
- Sales by vendor and country



## Key information available for:

- CRM
- Sales
- Procurement
- Stocks
- Production
- Equipment Maintenance
- Quality Control
- Treasury
- Accounting
- Human Resources
- Fixed Assets

# Sistrade Software for Label Printing

## Business Intelligence

Sistrade® Business Intelligence is a tool that collects and compiles large amounts of data in order to generate relevant information regarding the companies' operations. Through this module, companies have a better understanding of the daily operations as well as their environment.

Business Intelligence has a wide application when applied to an organization, as for example, Business, Finances, Sales, Purchases or Production.



### Sistrade Solution

- Perform analysis, by crossing multiple dimensions and metrics
- Apply filters to any dimension of analysis
- Results displayed analytically and graphically using any device: PC, tablet, smartphone
- Information updated hourly, daily or on weekly basis
- Set latency in order to generate, correct and updated data results
- Export data results to PDF, Excel and Word files

### Sales Dashboards

- Analyse sales by profit margin
- Article invoicing
- Payments to suppliers
- Receipts from customers

### Purchases Dashboards

- Analyse the major suppliers
- Most purchased products
- Inventory
- View inventory turnover rate

### Production Dashboards

- Deadline compliance rate
- Job order costs (actual cost vs estimated vs sales value)
- Setup time rate, percentage of setup time over the total production
- Availability ratio: time machine/section/plant should work vs time it is working



# Sistrade Software - MIS | ERP Solutions

## Commercial Management & Estimating

Estimating  
Customer Order  
Shipment  
Invoicing  
CRM

## Stocks & Purchases Management

MRP  
Purchases  
Stocks management  
Suppliers management  
WMS

## Production Management

Scheduling  
Data Collection  
Industrial Costing  
Job Order Management

## Administrative & Financial

Accounting  
Treasury  
Fixed Assets  
Human Resources



## Other features

Equipment Maintenance  
Quality Control  
Ecomanager  
Energy Management  
RDI Management

Business Intelligence  
Dynamic Dashboards  
Report Generator  
Web2Print  
Balanced Scorecard

# Sistrade Software for Label Printing

## Worldwide clients

Sistrade® MIS | ERP software is used by more than 5000 users, in more than 30 countries and spread over 4 continents.

Meet some of our clients from the Label Printing Industry:



### OLEGÁRIO FERNANDES - ARTES GRÁFICAS, S.A.

Portugal

Founded in 1922. Producer of cardboard boxes, self-adhesive label and wet-glue and film labels.



### PROEMPAQUES LTDA

Colombia

Company with over 35 years of experience, specializing in producing self-adhesive labels and flexible packaging for the food, cosmetics, agrochemical and pharmaceutical industry.



### ADHESIVOS ORCAJADA, S.A.L.

Spain

Established in 1995. Label producing company which develops technologies of flexographic printing, offering a wide range of services.







**ETILABEL**

Portugal

Etilabel, one of Grupo Ideal companies, specializes in printing adhesive labels in flexography and silk screen printing.



**herzogenetiketten**

**HERZOG ETIKETTEN KG**

Germany

Founded in 1924. Manufacturer of self adhesive labels for the tire industry, chemical industry, food and wine labels.

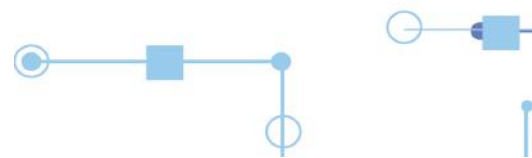


**EL YAMAN  
GROUP**

**EL YAMAN GROUP**

Lebanon

Company with the deft know-how of commercial printing technologies - provides Pre-press, Offset Printing, Digital Printing, Security Printing, Label Printing and Post-press services.





powered by **Sistrade**

## Porto - Headquarters

Travessa da Prelada, 511  
4250-380 Porto - Portugal  
+351 226 153 600  
inov@sistrade.com

## Madrid

Parque Empresarial La Moraleja  
Avenida de Europa, 19 3º A  
28042 Madrid - Spain  
madrid@sistrade.com

## Ljubljana

Rozna dolina, Cesta II/29  
1000 Ljubljana - Slovenia  
ljubljana@sistrade.com

## Paris

39 rue du Mûrier (BP 125)  
37540 Saint-Cyr-sur-Loire - France  
paris@sistrade.com

## Warsaw

Al. Niepodległości, 69 - 7º  
02-626 Warsaw - Poland  
warsaw@sistrade.com

## Istanbul

Dikilitaş Hakki Yeten Cad. Sel. Plaza, 10/C  
Kat:6 Fulya 34349 Besiktas - Turkey  
istanbul@sistrade.com

